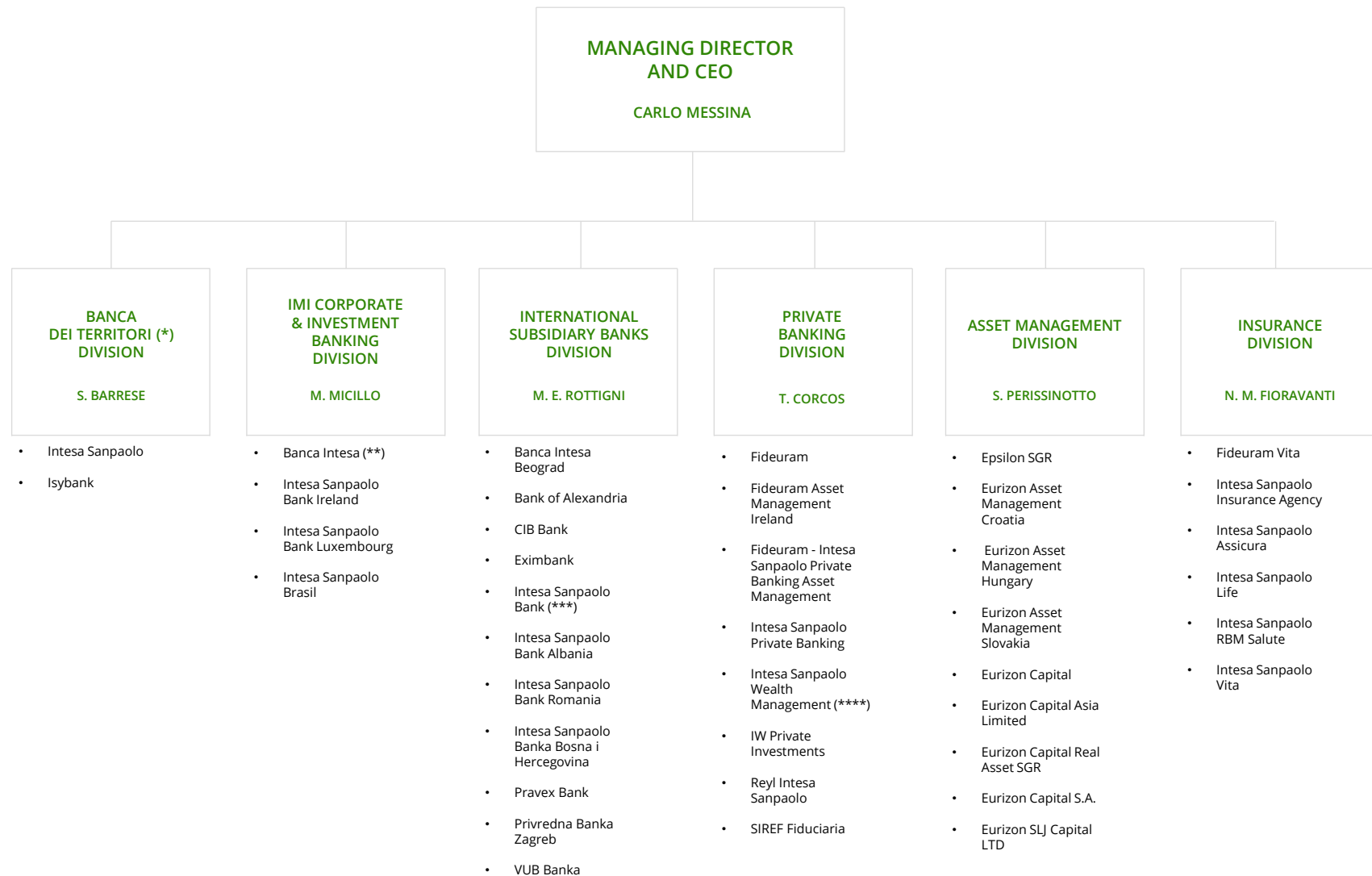


# Organisation chart of the Divisions



(\*) Domestic commercial banking

(\*\*) Russian Federation

(\*\*\*) Slovenia

(\*\*\*\*) Fideuram Bank Luxembourg and Compagnie de Banque Privée Quilvest merged on 1 January 2023, setting up Intesa Sanpaolo Wealth Management