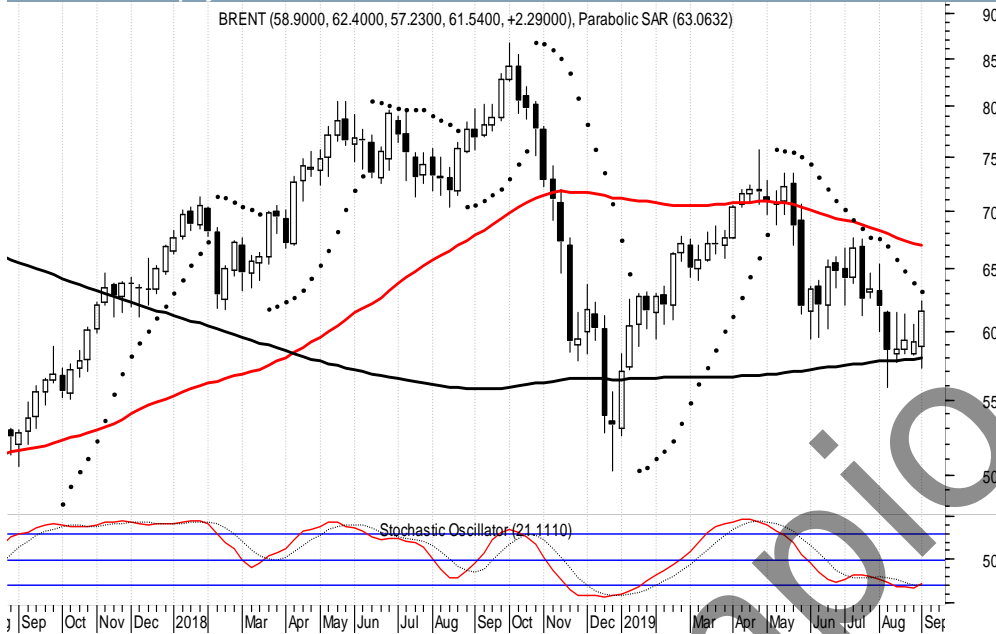


# Commodity Weekly

## Brent

Brent Future (Expiry date: Jan 2020)



Source: Thomson Reuters

The technical reaction seen last week has reached the expected targets proposed in the recent issue, at 60.70. As regards the short-term approach, the view is still favourable to a continuation of the rebound: therefore, in the coming sessions, the way is open to the reaching of targets in the 62.00/62.50 region, with a maximum extension to 64.50, where we expect a new weakness phase. On the other hand, only the loss of the 56 support level would result in an immediate continuation of the downward trend, towards the 52.30/52.00 area target, with possible extensions towards the key medium-term support area in the 50.50/50 area, where we expect a reaction.

### Technical levels

Res1	Res2	Res3	Close	Sup1	Sup2	Sup3
60.82	63.62	64.94	61.54	56.00	50.48	48.26

Source: Intesa Sanpaolo Research elaborations on Thomson Reuters data

### Decision support system

Time Horizon	Operational signal	Trend	Position	Target	Stop	R/R
Medium	HOLD	UP	SHORT	52.00	67.00	1.75
Short	HOLD	SIDEWAYS	SHORT	52.30	61.33	40

Source: Intesa Sanpaolo Research elaborations on Thomson Reuters data

**Expected range for the current week: 57.95 – 62.80**

**-9 September 2019: 12:01 CET**

Date and time of production

### Weekly Report

**Intesa Sanpaolo  
Research Department**

### Technical Analysis

**Corrado Binda**  
Technical Analyst  
+39 02 8793 5763  
corrado.binda@intesasanpaolo.com

**Sergio Mingolla**  
Technical Analyst  
+39 02 8793 5483  
antonio.mingolla@intesasanpaolo.com

**Date and time of first circulation:**

9 September 2019: 12:04 CET

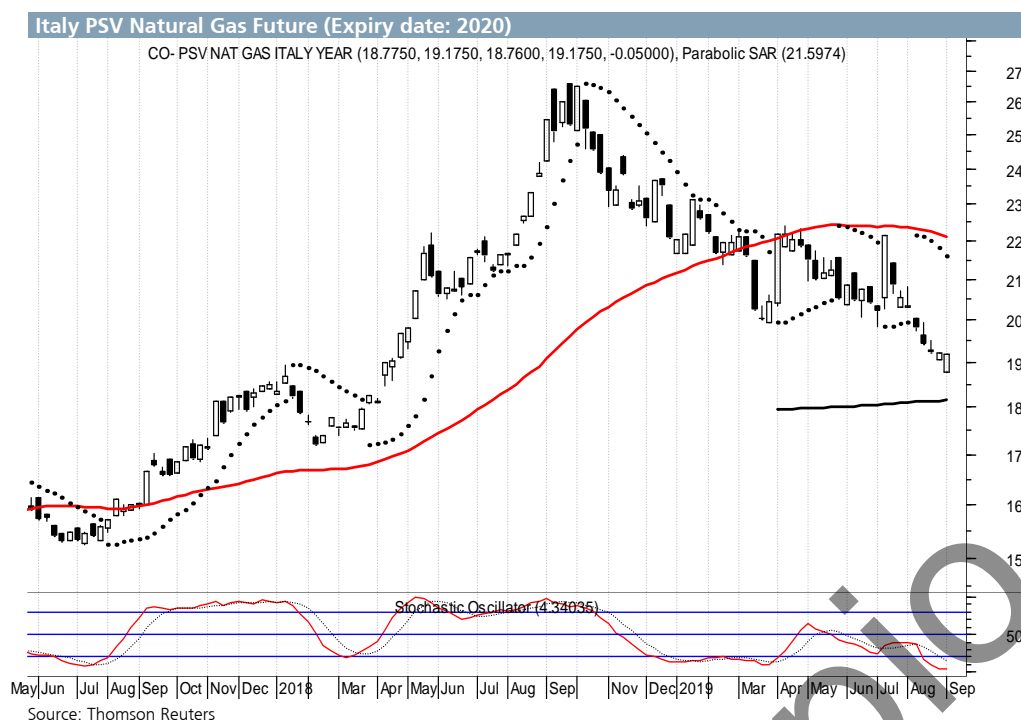
See page 4 for full disclosures and analyst certification

Banca IMI distributes this report issued by

**INTESA  SANPAOLO**

Report priced at market close on day prior to issue (except where otherwise indicated)

## Italy PSV Natural Gas



The rebound seen last week, while not showing signs of exhaustion, leaves the bearish structure unchanged. The subsequent target of the technical reaction is confirmed at 19.85/19.90, where a new weakness could start. In detail, an immediate continuation of the downside is subordinated to the breach of the 18.75 support level, towards the 18.55/18.50 area, with a maximum extension to the 17.50/17.40 area, where new purchasing initiatives could materialise. Conversely, the first signs of strength would take form with a re-positioning past 20.80: in this context the trades could return to the 21.35/21.40 area, with possible extensions up to 22.10/22.15, where a new weakness phase could then take shape.

Technical levels						
Res1	Res2	Res3	Close	Sup1	Sup2	Sup3
19.50	19.90	20.81	19.175	18.67	18.12	17.19

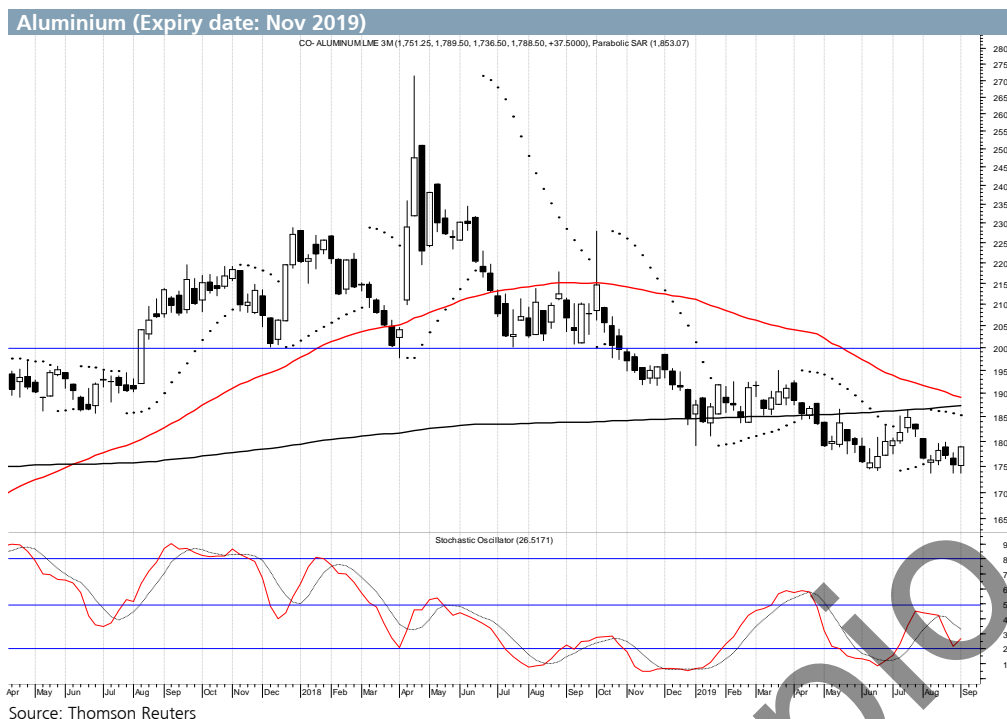
Source: Intesa Sanpaolo Research elaborations on Thomson Reuters data

Decision support system						
Time Horizon	Operational signal	Trend	Position	Target	Stop	R/R
Medium	HOLD	UP	SHORT	17.90	21.54	0.54
Short	HOLD	DOWN	SHORT	18.74	19.39	2.02

Source: Intesa Sanpaolo Research elaborations on Thomson Reuters data

**Expected range for the current week: 18.97 – 19.38**

## Focus Weekly: Aluminium



Although the baseline structure is confirmed as bearish, the sideways movement started in August leaves the way open to a technical reaction in the coming weeks. In particular, the reconquest of 1800 would push the trades to the 1825/1830 area, with possible extensions to 1860/1865, where we expect a new weakness phase. This last level could be a trigger for the activation of the first bullish signs in the coming months. Only a repositioning past this level would extend the upside to the 1920/1925 area. By contrast, an immediate resumption of the downtrend is subordinated to the loss of the 1735 support level, towards 1710/1705 before and subsequently to 1690/1685.

Technical levels						
Res1	Res2	Res3	Close	Sup1	Sup2	Sup3
1798	1830	1865	1788.50	1736	1678	1611

Source: processed by Intesa Sanpaolo Research on Thomson Reuters data

Decision support system							
Time Horizon	Operational signal	Trend	Position	Target	Stop	R/R	
Medium	SELL	DOWN	SHORT	1710	1865	1.01	
Short	BUY	DOWN	LONG	1822	1745	0.79	

Source: processed by Intesa Sanpaolo Research on Thomson Reuters data

**Expected range for the current week: 1762 – 1815**

## Disclaimer

### Analyst certification

The financial analysts who prepared this report, and whose names and roles appear on the first page of the document, certify that:

- The views expressed on companies mentioned herein accurately reflect independent, fair and balanced personal views of the analysts;
- No direct or indirect compensation has been or will be received in exchange for any views expressed.

### Specific disclosures

- Neither the analysts nor any persons closely associated with the analysts have a financial interest in the underlying financial instruments object of the research cited in the document;
- The analysts cited in the document are members of SIAT (Italian Association of Technical Analysis);
- The analysts of this report do not receive bonuses, salaries, or any other form of compensation that is based upon specific investment banking transactions.

### Important Disclosures

This research has been prepared by Intesa Sanpaolo SpA and distributed by Intesa Sanpaolo and/or Banca IMI SpA Milan. Intesa Sanpaolo SpA accepts full responsibility for the contents of this report and also reserves the right to issue this document to its own customers. Banca IMI SpA and Intesa Sanpaolo SpA, which are both part of the Intesa Sanpaolo Group, are both authorised by the Banca d'Italia.

Opinions and estimates contained in this research are as at the date of this material and are subject to change without notice to the recipient. Information and opinions have been obtained from sources believed to be reliable, but no representation or warranty is made as to their accuracy or correctness. Past performance is not a guarantee of future results. The investments and strategies discussed herein may not be suitable for all investors. Before making the investment, if you are in any doubt, you should consult your investment advisor.

The data mentioned in this document are public and available from the major agencies (Bloomberg and Thomson Reuters).

This report has been prepared solely for information purposes and is not intended as an offer or solicitation with respect to the purchase or sale of any financial products. It should not be regarded as a substitute for the exercise of the recipient's own judgment. No Intesa Sanpaolo SpA or Banca IMI SpA entities accept any liability whatsoever for any direct, consequential or indirect loss arising from any use of material contained in this report. This document may only be reproduced or published together with the name of Intesa Sanpaolo SpA and Banca IMI SpA.

Intesa Sanpaolo SpA and Banca IMI SpA have in place the Conflicts of Interest Management Rules for managing effectively the conflicts of interest which might affect the impartiality of all investment research which is held out, or where it is reasonable for the user to rely on the research, as being an impartial assessment of the value or prospects of its subject matter. A copy of these Rules are available to the recipient of this research upon making a written request to the Compliance Officer, Intesa Sanpaolo SpA, C.so Matteotti n° 1, 20121 Milan (MI) Italy. Intesa Sanpaolo SpA has formalised a set of principles and procedures for dealing with conflicts of interest ("Rules for Research"). The Rules for Research is clearly explained in the relevant section of Intesa Sanpaolo's web site ([www.intesasnpaolo.com](http://www.intesasnpaolo.com)).

Member companies of the Intesa Sanpaolo Group, or their directors and/or representatives and/or employees and/or persons closely associated with them, may have a long or short position in any securities mentioned at any time, and may make a purchase and/or sale, or offer to make a purchase and/or sale, of any of the securities from time to time in the open market or otherwise.

Intesa Sanpaolo SpA issues and circulates research to Major Institutional Investors in the USA only through Banca IMI Securities Corp., 1 William Street, New York, NY 10004, USA, Tel: (1) 212 326 1150.

**Residents in Italy:** This document is intended for distribution only to professional clients and qualified counterparties as defined in Consob Regulation no. 20307 of 15.02.2018, as subsequently amended and supplemented, either as a printed document and/or in electronic form.

**Person and residents in the UK:** This document is not for distribution in the United Kingdom to persons who would be defined as private customers under rules of the FCA.

**US persons:** This document is intended for distribution in the United States only to Major US Institutional Investors as defined in SEC Rule 15a-6. US Customers wishing to effect a transaction should do so only by contacting a representative at Banca IMI Securities Corp. in the US (see contact details above).

### Method of distribution

This document is for the exclusive use of the person to whom it is delivered by Banca IMI and Intesa Sanpaolo and may not be reproduced, redistributed, directly or indirectly, to third parties or published, in whole or in part, for any reason, without prior consent expressed by Banca IMI and/or Intesa Sanpaolo. The copyright and all other intellectual property rights on the data, information, opinions and assessments referred to in this information document are the exclusive domain of the Intesa Sanpaolo banking group, unless otherwise indicated. Such data, information, opinions and assessments cannot be the subject of further distribution or reproduction in any form and using any technique, even partially, except with express written consent by Banca IMI and/or Intesa Sanpaolo.

Persons who receive this document are obliged to comply with the above indications.

### Coverage Policy and Frequency of reports

This document contains prices, key technical levels and comments on the Brent Future, the Italy PSV Natural Gas and a third commodity selected from the 'Commodity Future Basket' report, which includes the futures contracts on commodities traded on the main international markets (ICE, CME, CMX, NYMEX, LME). The time series were obtained from generic futures (source: Bloomberg).

This report is published weekly.

The research report is available at Banca IMI ([www.bancaimi.com](http://www.bancaimi.com)) or by contacting your sales representative.

## Methodology

This document has been prepared on the basis of technical analysis. Technical analysis is the study of market variables, such as price, pattern, frequencies, graphical configurations, volumes, movement dynamics, temporality and cyclical trends, volatility, and market psychology. The aim of the analysis is to correctly evaluate the investment risk and probable future trend of the security being analysed. The analysis is based on historical series, requiring the maintenance of a database of each security. The analysis in this report is based on professional experience in the application of technical analysis. The information and signals are generated based on data obtained from sources deemed reliable and truthful. Past performance is not a guarantee of future results.

### Trend:

The trend is the direction of the security analysed on the basis of historical data, which can be UP (bullish), DOWN (bearish) or SIDEWAYS (neutral). Past performance is not a guarantee of the future performance of the security analysed

### Support (SUP1 – SUP2 – SUP3):

The support level is the level where prices tend to find support going downwards. A breach of the support level shown in the table (first Support) can lead to further selling pressure and a test of the next level (second Support). Support levels can be static (i.e. the level does not change over time) or dynamic (i.e. the level changes over time).

### Resistance (RES1 – RES2 – RES3):

The resistance level is the level where prices tend to find resistance going upwards. A breach of the resistance level shown in the table (first Resistance) can lead to further price rises and a test of the next level (second Resistance). Resistance levels can be static (i.e. the level does not change with time) or dynamic (i.e. the level changes over time).

### Position (D.S.S.: decision support system – an automatic and objective trading system based on proprietary algorithms):

Trades can be LONG (bullish), SHORT (bearish) or FLAT (neutral/out of the market).

### Stop:

The stop is a defined price level, calculated on the basis of objective mathematical models, the breach of which triggers the automatic closing of the position on a daily basis. The Stop is a key tool in the management of risk in financial investments.

### Target:

The target is a defined price level, calculated on the basis of objective mathematical models. The Target can be modified once reached (or when market conditions change) to higher or lower price targets depending on the type of trade (LONG or SHORT) according to the dynamics of the security analysed.

### R/R (Risk/Reward Ratio):

R/R defines the relationship between the potential gain and the potential loss of the trade with respect to the last observed price.

In general, a preferable risk/reward ratio is above one, as there is a higher potential for profit versus the risk of incurring a loss.

### Expected range for the week:

The maximum and minimum values expected for the week

### Charts:

In addition to the data in table format, the report includes graphs of the securities analysed on a daily basis with three moving averages (short, medium and long term) calculated on the closing prices. The Stochastic Oscillator (with a moving average calculated on it) is also used to identify the momentum of the security.

### Time horizon:

The time horizon of the technical analysis can be divided into:

#### a) Short-term period

- Ranging from the next three sessions to three weeks;
- A variation range of 5-7%;

#### b) Medium/long period

- Ranging from the next three weeks up to two years;
- A variation range of 8-10% or above;

## Operational signals

The signals BUY (new buy signal), SELL (new sell signal), LONG (maintain upwards position), SHORT (maintain downwards position) and FLAT (neutral/out of the market) are generated automatically by a system based on technical analysis' oscillators and indicators. The indication of trend, support, resistance, operating positions, stop, stress and price target are generated using algorithmic methods. The analysis is automatically updated to reflect the dynamics of the securities analysed.

### Disclosure of potential conflicts of interest

Intesa Sanpaolo S.p.A. and the other companies belonging to the Intesa Sanpaolo Banking Group (jointly also the "Intesa Sanpaolo Banking Group") have adopted written guidelines "Modello di Organizzazione, Gestione e Controllo" pursuant to Legislative Decree 8 June, 2001 no. 231 (available at the Intesa Sanpaolo website, webpage [http://www.group.intesasanpaolo.com/scriptlsir0/si09/governance/eng\\_wp\\_governance.jsp](http://www.group.intesasanpaolo.com/scriptlsir0/si09/governance/eng_wp_governance.jsp), along with a summary sheet, webpage <https://www.bancaimi.com/en/bancaimi/chisiamo/documentazione/normative>) setting forth practices and procedures, in accordance with applicable regulations by the competent Italian authorities and best international practice, including those known as Information Barriers, to restrict the flow of information, namely inside and/or confidential information, to prevent the misuse of such information and to prevent any conflicts of interest arising from the many activities of the Intesa Sanpaolo Banking Group which may adversely affect the interests of the customer in accordance with current regulations.

In particular, the description of the measures taken to manage interest and conflicts of interest – related to Articles 5 and 6 of the Commission Delegated Regulation (EU) 2016/958 of 9 March 2016 supplementing Regulation (EU) No. 596/2014 of the European Parliament and of the Council with regard to regulatory technical standards for the technical arrangements for objective presentation of investment recommendations or other information recommending or suggesting an investment strategy and for disclosure of particular interests or indications of conflicts of interest as subsequently amended and supplemented, the FINRA Rule 2241, as well as the FCA Conduct of Business Sourcebook rules COBS 12.4 - between the Intesa Sanpaolo Banking Group and issuers of financial instruments, and their group companies, and referred to in research products produced by analysts at Intesa Sanpaolo S.p.A. is available in the "Rules for Research " and in the extract of the "Corporate model on the management of inside information and conflicts of interest" published on the website of Intesa Sanpaolo S.p.A.

At the Intesa Sanpaolo website, webpage [www.group.intesasanpaolo.com/scriptlsir0/si09/studi/eng\\_archivio\\_conflitti\\_mad.jsp](http://www.group.intesasanpaolo.com/scriptlsir0/si09/studi/eng_archivio_conflitti_mad.jsp) you can find the archive of Intesa Sanpaolo Banking Group's conflicts of interest.

Furthermore, in accordance with the aforesaid regulations, the disclosures of the Intesa Sanpaolo Banking Group's conflicts of interest are available from the abovementioned webpage. The conflicts of interest published on the internet site are updated to at least the day before the publishing date of this report.

We highlight that disclosures are also available to the recipient of this report upon making a written request to Intesa Sanpaolo – Equity & Credit Research, Via Manzoni, 4 - 20121 Milan - Italy.

Member companies of the Intesa Sanpaolo Group, or their directors and/or representatives and/or employees and/or persons closely associated with them, may have a long or short position in any securities mentioned at any time, and may make a purchase and/or sale, or offer to make a purchase and/or sale, of any of the securities from time to time in the open market or otherwise.

#### Intesa Sanpaolo Head of Equity & Credit Research - Giampaolo Trasi

##### Technical Analysis

Corrado Binda	+39 02 8021 5763	corrado.binda@intesasanpaolo.com
Sergio Mingolla	+39 02 8021 5483	antonio.mingolla@intesasanpaolo.com